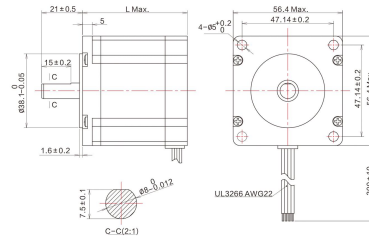


两相高性能混合式步进电机

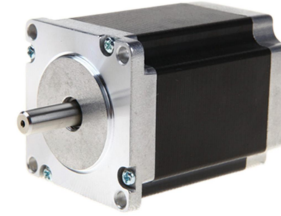
TWO PHASE STEPPING MOTORS

步距精度	温升	环境温度	绝缘电阻	耐压	径向跳动	轴向跳动
Step Angle Accuracy	Temperature Rise	Ambient Temperature	Insulation Resistance	Dielectric Strength	Shaft Radial Play	Shaft Axial Play
5%	80°C Max	-20°C ~ +50°C	100MΩ Min (500VDC)	500V AC 1 Minute	最大0.02mm (450g负载)	最大0.08mm (450g负载)

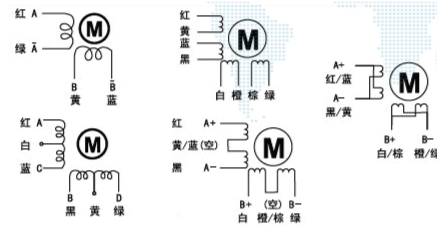
● 机械尺寸图/DIMENSION: UNIT=MM



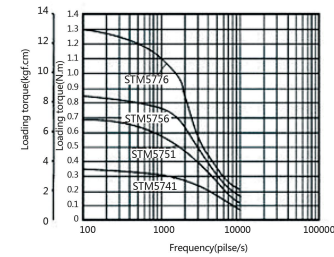
● 外观图/APPEARANCE



● 接线图/WIRING DIAGRAM



● 力矩曲线图/DYNAMIC TORQUE



● 技术参数/TECHNICAL SPECIFICATIONS

型号	机身长度	步距角	额定电流	电阻	电感	保持转矩	转子惯量	重量	轴径	轴伸(轴长)	键槽	适配驱动器
Model	Length L (mm)	Step Angle (°)	Current (A/phase)	Resistance (Ω)	Inductance (mH)	Holding Torque (N.m)	Rotor Inertia (g.cm ²)	Weight (Kg)	Shaft Diameter (mm)	Axis Stretch (mm)		Matching Driver
STM5741	41	1.8	2	1.4	1.4	0.39	120	0.45	6.35	21		STD245M STD258M
STM5751	51		3	1.65	0.9	0.72	275	0.65	6.35	21		
STM5756	56		3	0.75	1.1	0.9	300	0.7	6.35	21	扁轴	
			3	0.75	1.1	0.9	300	0.7	8	21	扁轴	
STM5776	76		3	1	1.6	1.35	480	1	6.35	21	扁轴	
STM5784	84		3	1.1	2.5	1.6	520	1.2	8	21	扁轴	
STM112	112	3	1.8	3.8	2.5	650	1.8	8	21	扁轴		

备注：以上为常规性产品，轴径、轴长以及不同轴产品可根据客户需求定制。