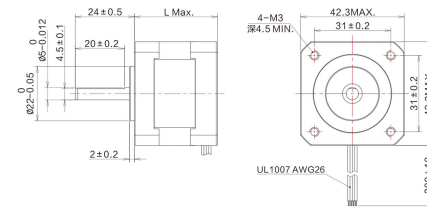


两相高性能混合式步进电机

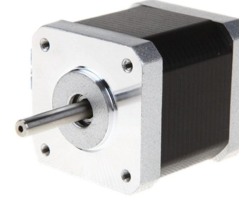
TWO PHASE STEPPING MOTORS

步距精度	温升	环境温度	绝缘电阻	耐压	径向跳动	轴向跳动
Step Angle Accuracy	Temperature Rise	Ambient Temperature	Insulation Resistance	Dielectric Strength	Shaft Radial Play	Shaft Axial Play
5%	80°C Max	-20°C ~ +50°C	100MΩ Min (500VDC)	500V AC 1 Minute	最大0.02mm (450g负载)	最大0.08mm (450g负载)

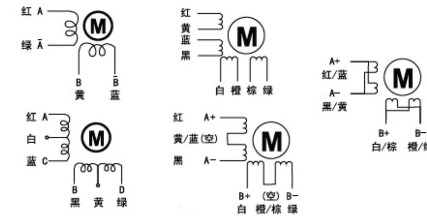
● 机械尺寸图/DIMENSION: UNIT=MM



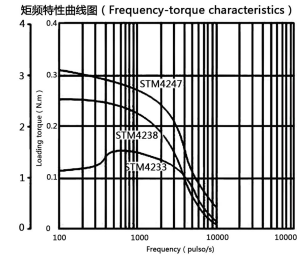
● 外观图/APPEARANCE



● 接线图/WIRING DIAGRAM



● 力矩曲线图/DYNAMIC TORQUE



● 技术参数/TECHNICAL SPECIFICATIONS

型号 Model	机身长度 Length L (mm)	步距角 Step Angle (°)	电压 Voltage (V)	电流 Current (A/phase)	电阻 Resistance (Ω)	电感 Inductance (mH)	保持转矩 Holding Torque (N.m)	转子惯量 Rotor Inertia (g.cm ²)	重量 Weight (kg)	轴径 Shaft Diameter (mm)	轴伸 Axis Stretch (mm)	键槽 扁轴 圆轴	适配驱动器 Matching Driver
STM4233	33	1.8	3.99	0.95	4.20	2.50	0.22	38.00	0.20	5.00	25.00	扁轴	STD245M
STM4238	38		3.96	1.20	3.30	3.20	0.33	54.00	0.28	5.00	25.00	扁轴	
STM4247	47		3.96	1.20	3.30	4.30	0.44	68.00	0.35	5.00	25.00	扁轴	
STM4260	60		6.60	1.20	5.50	6.40	0.60	102.00	0.50	5.00	25.00 21.00	扁轴	

备注：以上为常规性产品，轴径、轴长以及不同轴产品可根据客户需求定制。