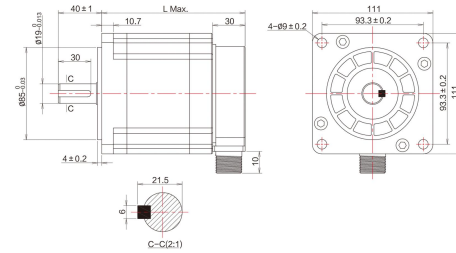


## 三相高性能混合式步进电机

## THREE PHASE STEPPING MOTORS

步距精度	温升	环境温度	绝缘电阻	耐压	径向跳动	轴向跳动
Step Angle Accuracy	Temperature Rise	Ambient Temperature	Insulation Resistance	Dielectric Strength	Shaft Radial Play	Shaft Axial Play
5%	80°C Max	-20°C ~ +50°C	100MΩ Min (500VDC)	500V AC 1 Minute	最大0.06mm (450g负载)	最大0.08mm (450g负载)

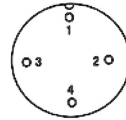
### ● 机械尺寸图/DIMENSION: UNIT=MM



### ● 外观图/APPEARANCE

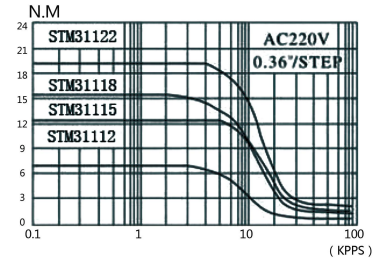


### ● 接线图/WIRING DIAGRAM



序号	1	2	3	4	备注
serial number					remarks
相序	U	V	W	GND	四芯插座
phase sequence	U	V	W	GND	four-core socket

### ● 力矩曲线图/DYNAMIC TORQUE



### ● 技术参数/TECHNICAL SPECIFICATIONS

型号	机身长度	步距角	额定电流	电阻	电感	保持转矩	转子惯量	重量	轴径	轴伸(轴长)	键槽	适配驱动器
Model	Length L (mm)	Step Angle (°)	Current (A/phase)	Resistance (Ω)	Inductance (mH)	Holding Torque (N.m)	Rotor Inertia (g.cm <sup>2</sup> )	Weight (Kg)	Shaft Diameter (mm)	Axis Strotch (mm)	Key	Matching Driver
STM31112	127	1.2°	4.3	1.04	4.3	8	6000	5	19	40	6×6×30	STD3522M
STM31115	151		6	0.6	2.67	12	9720	6.3	19	40	6×6×30	STD3522M
STM31118	185		6.4	0.7	2.96	16	13560	8.5	19	40	6×6×30	STD3722L
STM31122	219		6.9	0.57	2.46	20	17400	10.7	19	40	6×6×30	STD3722L

备注：以上为常规性产品，轴径、轴长以及不同轴产品可根据客户需求定制。